

SHEAR BEAM LOAD CELL

NSB



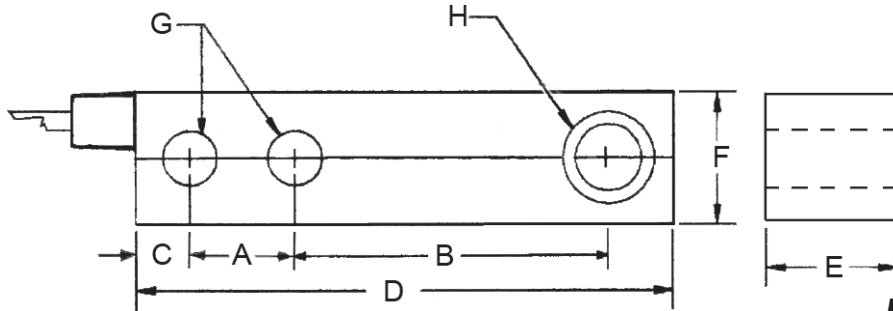
NIKKEI
NSB (Nickel Plated)
NSB-SS (Stainless Steel)

Nikkei Shear Beam Load Cell for use in low profile platform scales and tank scales.

- ✓ *Environmentally protected with waterproof seal.*
- ✓ *Stainless Steel or Nickel plated finish.*
- ✓ *Interchangeable with Sensortronics 65023.*
- ✓ *Reliable-Durable-Precise.*
- ✓ *Available in capacities from 250 - 20K lb.*
- ✓ *Includes 20ft. 4 cond. cable.*



Totalcomp[®] Scales & Components



NSB BEAM LOAD CELL

These Shear Beam Load Cells are interchangeable with Sensortronics 65023 and RTI 5123 (NSB) and Sensortronics 65023-SS and RTI 9123 (NSB-SS). They are constructed from Stainless Steel or Nickel Plated for washability and protection from harsh environments.

Part Number Nickel Plated	Part Number Stainless Steel	Capacity	Weight	A	B	C	D	E	F	G	H
NSB-250*	NSB-250-SS	250 lb	3 lb	1.00	3.00	0.62	5.12	1.00	1.25	0.53	1/2-20
NSB-500*	NSB-500-SS	500 lb	3 lb	1.00	3.00	0.62	5.12	1.00	1.25	0.53	1/2-20
NSB-1K	NSB-1K-SS	1,000 lb	3 lb	1.00	3.00	0.62	5.12	1.25	1.25	0.53	1/2-20
NSB-1.5K	NSB-1.5K-SS	1,500 lb	3 lb	1.00	3.00	0.62	5.12	1.25	1.25	0.53	1/2-20
NSB-2K	NSB-2K-SS	2,000 lb	3 lb	1.00	3.00	0.62	5.12	1.25	1.25	0.53	1/2-20
NSB-2.5K	NSB-2.5K-SS	2,500 lb	3 lb	1.00	3.00	0.62	5.12	1.25	1.25	0.53	1/2-20
NSB-4K	NSB-4K-SS	4,000 lb	3 lb	1.00	3.00	0.62	5.12	1.25	1.25	0.53	1/2-20
NSB-5K-SE	NSB-5K-SE-SS	5,000 lb	3 lb	1.50	3.75	0.75	6.75	1.50	1.50	0.78	3/4-16
NSB-5K	NSB-5K-SS	5,000 lb	5 lb	1.50	3.75	0.75	6.75	1.50	1.50	0.78	3/4-16
NSB-10K	NSB-10K-SS	10,000 lb	5 lb	1.50	3.75	0.75	6.75	1.50	1.50	0.78	3/4-16
	NSB-10K-SS-40*	10,000 lb	6 lb	2.00	4.88	1.00	8.88	2.00	2.00	1.03	1"-14
NSB-15K*	NSB-15K-SS	15,000 lb	9 lb	2.00	4.88	1.00	8.88	2.00	2.00	1.03	1"-14
NSB-20K*	NSB-20K-SS	20,000 lb	9 lb	2.00	4.88	1.00	8.88	2.00	2.00	1.03	1"-14

*Not NTEP

* w/ 40ft cable

Performance

Full Scale Output
3 mV/V $\pm 0.25\%$

Combined Error
 $\pm 0.03\%$ FSO

Nonlinearity
 $\pm 0.03\%$ FSO

Hysteresis
 $\pm 0.02\%$

Creep
 $\pm 0.03\%$ FS in 20 min

Non-Repeatability
 $\pm 0.01\%$ FSO

Zero Balance

$\pm 1.0\%$ FSO

Overload Safe
150% FSO

Overload Ultimate
300% FSO

Electrical

Bridge Resistance
350 ohms $\pm 3.5\%$

Excitation Voltage

10VDC (15VDC Max)

Insulation Resistance
10KM ohms @ 50VDC

Temperature

Compensated Range
-0°F to +150°F

Temperature Operating Range
-16°C to +65°C

Effect on Zero Balance
0.0011% FSO/deg F

Effect on FS Output
0.0008% FSO/deg F

Mechanical

Material

Nickel Plated
Stainless Steel

Sealing

IP67

Wiring

Cable Length & Type
20 foot, 4 conductor

Cable Color Code

+ Excitation.....Red
- Excitation.....Black
+ Output.....White
- Output.....Green

TOTALCOMP LIMITED WARRANTY

Totalcomp warrants this product to be free of defects in materials and/or workmanship and suitable for the purpose(s) intended as outlined on this sheet. This warranty is effective and shall cover the purchaser for one year from the date of shipment from our plant. If this product is found to be defective by our inspection in accordance with the above listed criteria, we will replace or repair it at our expense. For warranty service, please obtain a return authorization number from us and return the item, shipping prepaid, with a written description of the problem. We will respond promptly with the results of our evaluation.